

EVOLUTION E²

Wickless Curing Envelope System



Put To The Test!

 *Shamrock*
MARKETING INC.

BACKGROUND OF THE EVOLUTION E² WICKLESS ENVELOPE TEST

Purpose: To retread a tire in the precure system without a traditional wicking device, utilizing only the internal venting system of the Evolution precure envelope.

Methodology:

Goodyear Authorized Retreading process.

A wicking device (cloth, rubber, valve disc, etc.) is not used.

After final inspection the finished tire is buffed in increments and inspected by the shop manager at each buff level.

Tire is buffed through to under-tread removing all cured cushion gum.

Test Facility: Raben Tire, Goodyear Authorized Retreader.

Tire Size: 11R22.5

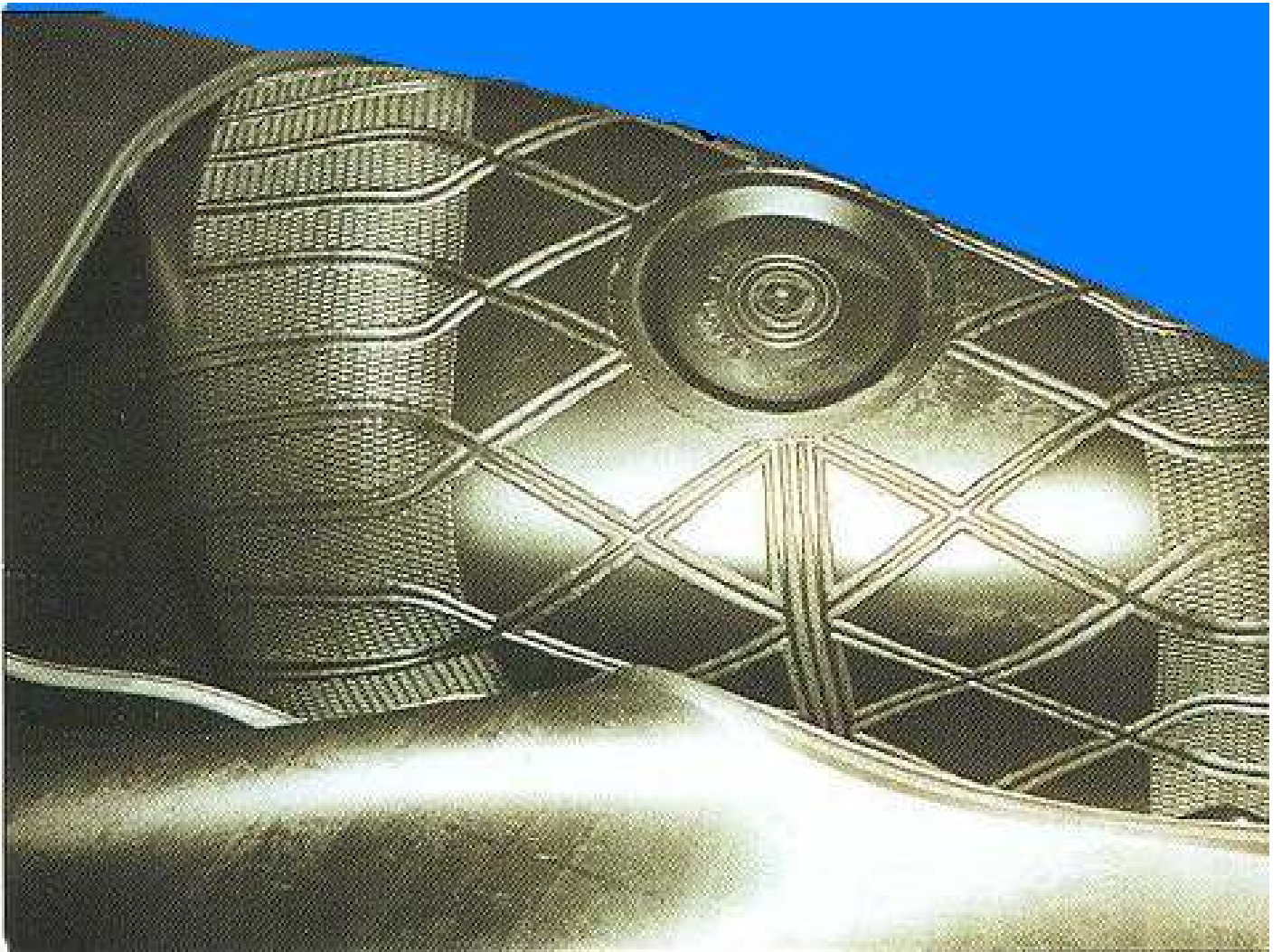
Tire Brand/Type: Goodyear G149 RSA

Precure Tread: G159 Trailer Tread 12/32”

Envelope: Shamrock’s Evolution E² Internal Venting Envelope

Test Date: 10/12/2009

Interior venting of the Evolution E² envelope in crown area and valve base.



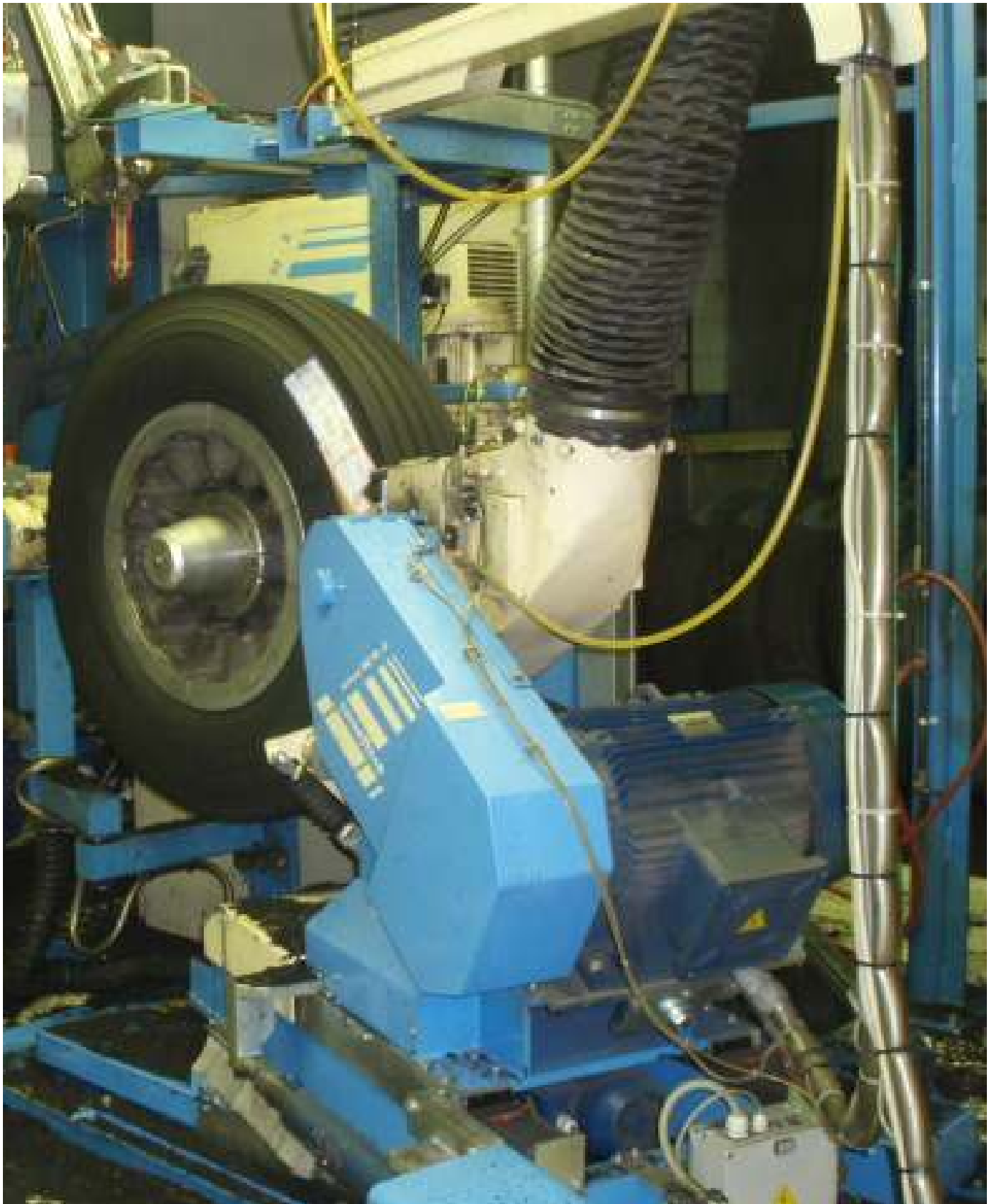
Example of Evolution E² interior venting envelope on a tire.



Test tire post cure at final inspection station.



Finished test tire being buffed post cure.









RESULT: Successful cure!
The Evolution E² with internal venting system accommodated a wickless cure.

