

# EQUIPMENT & ACCESSORIES

FOR OTR RETREAD & REPAIR



OTR

# OTR RETREADING

## TRM equipment



Inspection stand OTR



Eagle OTR Buffer



OTR Universal Press



Omega Mammuth



TRM Eagle OTR 63

## OTR Curing Tubes & Flaps



Curing Tubes

OTR CURING FLAPS	
Item #	Size
Q1/G241H	24/25-10
Q1/G242H	24/25-12
Q1/G244H	24/25-14
Q1/G248H	24/25-18
Q1/G249H	24/25-19.5
Q1/G252H	24/25-23.5
Q1/G291R	24" x 8.5"
Q1/G292R	24" x 14"
Q1/G293R	24" x 16.75"
Q1/G294R	24" x 22"
Q1/G295R	25" x 23.625"
Q1/G296R	26" x 21.625"
Q1/G297R	26" x 23.625"
Q1/G298R	29" x 26"
Q1/G299R	29" x 29.5"
Q1/G300R	33" x 13"
Q1/G301R	33" x 17"

More sizes and custom sizes available.

OTR CURING TUBES	
Item #	SP1000 Valve
RN/M140H	1400-24/25
RN/M175H	17.5-25
RN/M185H	20.5/1800-25
RN/M235H	23.5-25
RN/M265H	26.5-25
RN/M295H	29.5-25
RN/M299H	29.5-29
RN/P183H	1800-33
RN/P215H	2100-35
RT/2935H	29.5R35 Standard Radial OTR Tube



Curing Flaps

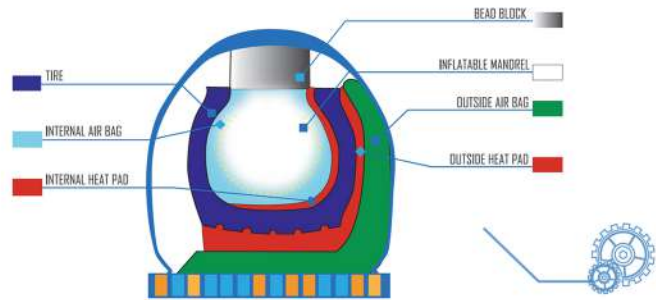
# OTR TIRE REPAIR



## Repair Molds



**Vulcan Vulcap MV-40 section repair mold**



**System Diagram**

## VulcaFlex Bag & Strap System



**Vulcan Vulcap I shape heat pads**



**Vulcan Vulcap Heatpads**



**Vulcaflex 47x47 Harness Bag**



**Vulcan Vulcap Air Bags**





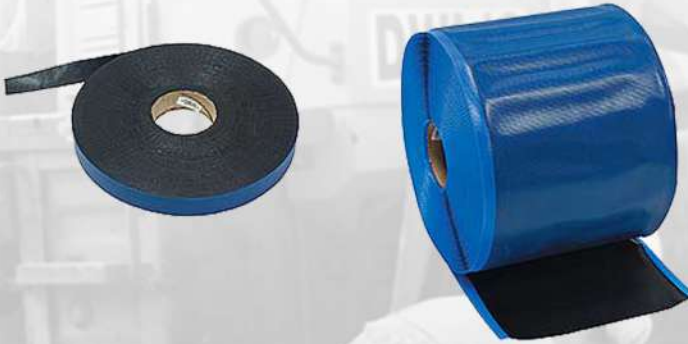
Patches



GTR Radial Repair Unit



OTR BIAS Repair Unit



OTR Retread Precure Cushion Gum



OTR Retread Cushion Gum

Cement



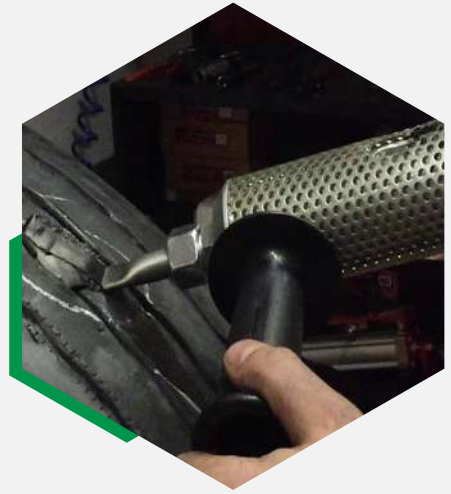
Remasol Brush Cement

Solvent



Remasol Rubber Solvent

## Extruder Gun



Item #	Voltage	Temperature Range	Air Pressure Required	Extruded Rubber Capacity
<i>OTR Heavy Duty with Bosch Drives</i>				
EX/BHOTR	110V	104°F - 248°F / 40°C - 120°C	90 - 100 psi/6 - 7 bar	62 lbs/hr - 28 kg/hr
EX/BHOTS	220V	104°F - 248°F / 40°C - 120°C	90 - 100 psi/6 - 7 bar	62 lbs/hr - 28 kg/hr

## Tobey Rasps

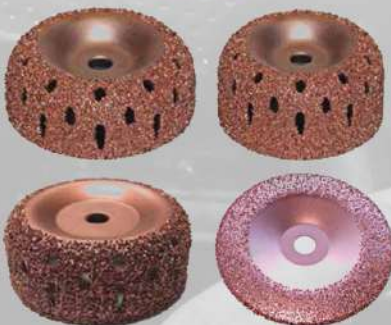
Flat-faced Carbide Rasps



Round-faced Carbide Rasps



Solid Contour Cup Rasps



Vented Curved Cup Rasps

Copper Flat Disks

## Wyco Flex Shaft Buffer



**Flex Shaft Buffer 1HP Wyco  
3,450 RPM 115V 60HZ 1PH**



# OTR TIRE SERVICE

Tire cage



Cribbing



Bead breakers



O-rings



Four-Way Tool



Tread depth gauges



**EXPERIENCED  
CRAFTSMAN KNOW**



**ONLY  
THE BEST WILL DO**

 **Shamrock**  
**MARKETING INC.**

— EST. 1992 —

Representing Global Leaders in  
Retreading Equipment & Consumables

**TRM**  
Retreading Technologies

**VULCAN**  
**VULCAP**





[www.shamrockmarketinginc.com](http://www.shamrockmarketinginc.com) | 502.266.7403